

# Historic Village of Valley Falls

## Proposed Land Uses + Connectivity



### Proposed Land Uses

-  Mixed-Use (retail and residential)
-  Community Service
-  Event Space
-  Recreation

### Strategic Sites

- 1** Former Thompson Mill Site
- 2** State Street / NY-67 Intersection
- 3** State Street Corridor
- 4** Alley Improvements
- 5** Village Hall + Former Fire Dept.
- 6** Village Playground
- 7** Former Church
- 8** Rail to Trail

To learn more about this project, please visit [www.HistoricValleyFalls.com](http://www.HistoricValleyFalls.com)



# 1 Former Mill + NY-67 Intersection

## Alternative A

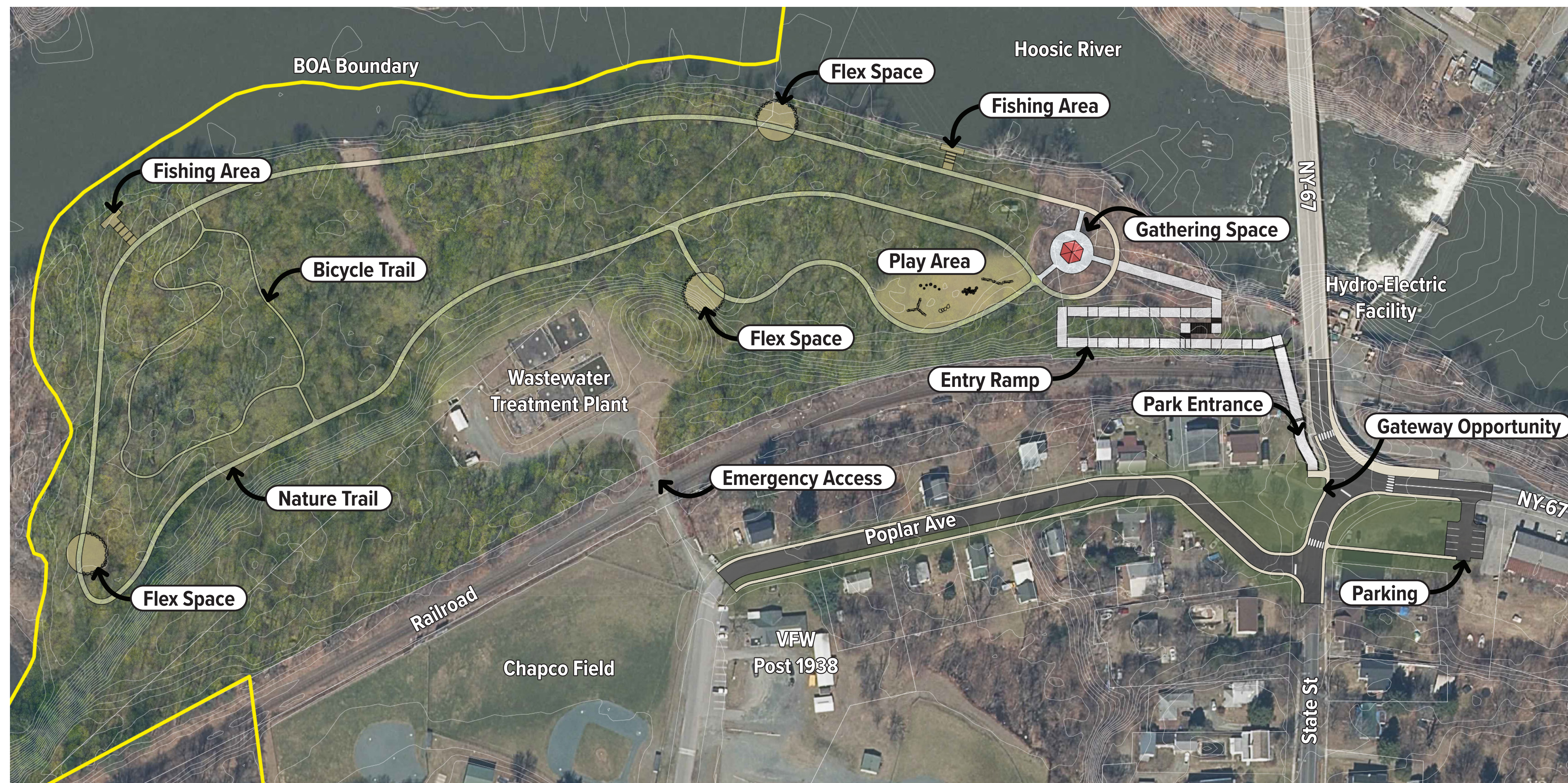
This project will create a waterfront park at the former Thompson Mill property complete with walking trails, waterfront gathering spaces, and a play area. A ramp will provide access from Poplar Ave down to the park.

Poplar Ave will be redirected to intersect with State St slightly more south of NY-67 to help traffic flow.

### Representative Imagery



### Conceptual Plan



### Question

If the Library were to rent out items for use at the waterfront park, which items would you want offered? Place a sticker below!

hammock

binoculars

compass

map

fishing pole

other



# 1 Former Mill + NY-67 Intersection

## Alternative B

This project will create a waterfront park at the former Thompson Mill property complete with walking trails, waterfront gathering spaces, and a play area. A ramp will provide access from Poplar Ave down to the park.

The intersection of State St and NY-67 will be reimagined as a roundabout to help traffic flow and create a Village gateway.

### Representative Imagery



### Conceptual Plan



### Question

How would you like to use flex spaces in the waterfront park? Place a sticker below!

youth activities

outdoor classroom

seating/hammock area

yoga/fitness

plein air painting

other



# 3 State Street Corridor

This project will upgrade the stormwater management infrastructure along State Street.

Open drainage would introduce bioretention areas along State Street with underdrains to manage large amounts of rainfall and runoff.

Closed drainage would flatten the space between State Street and the sidewalk. All stormwater would flow into catch basins and be conveyed through an underground drainage system..

## Existing Condition



## Question

Which stormwater management method would you prefer on State Street? Place a sticker below!

open drainage

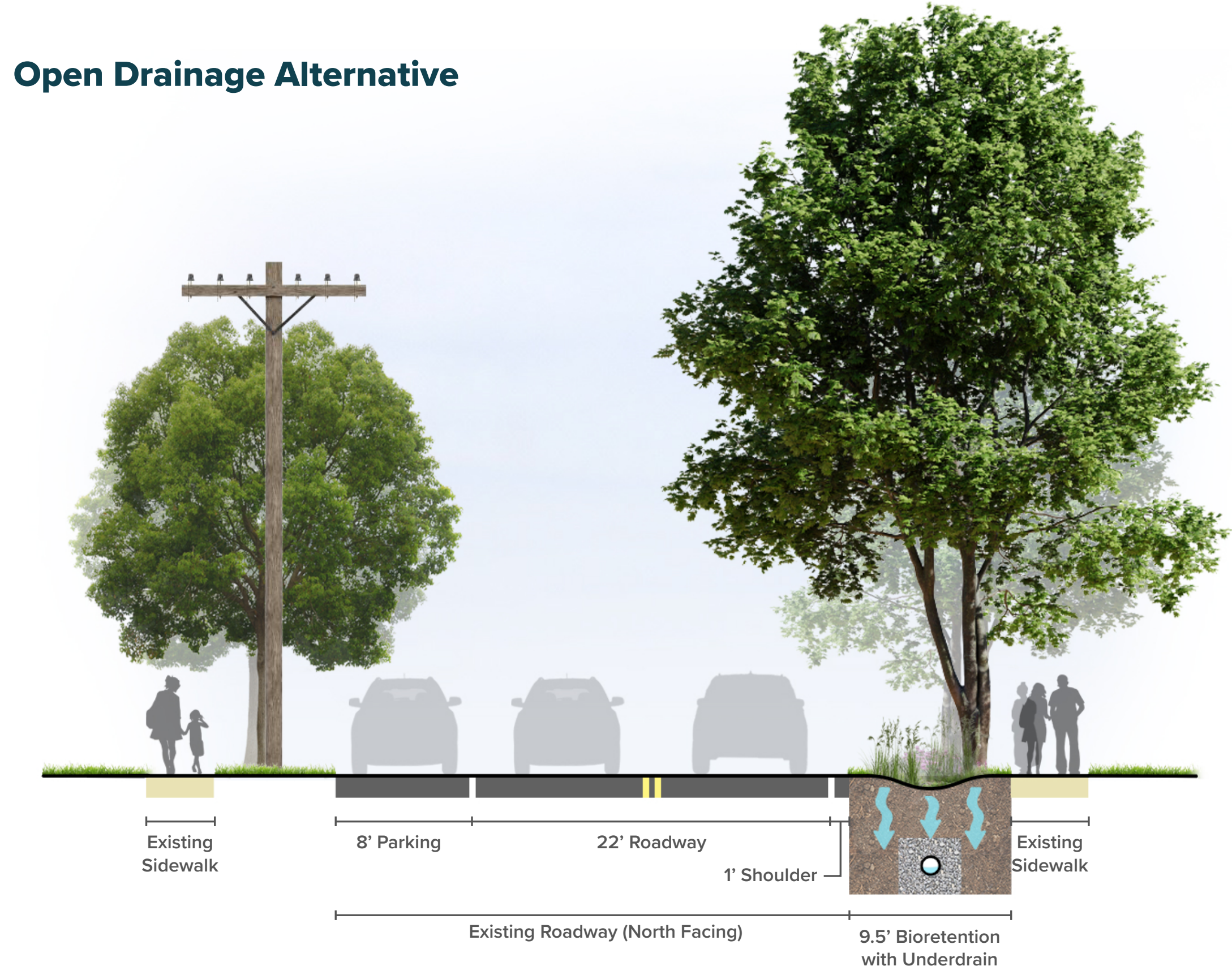
closed drainage

combination of open/closed drainage

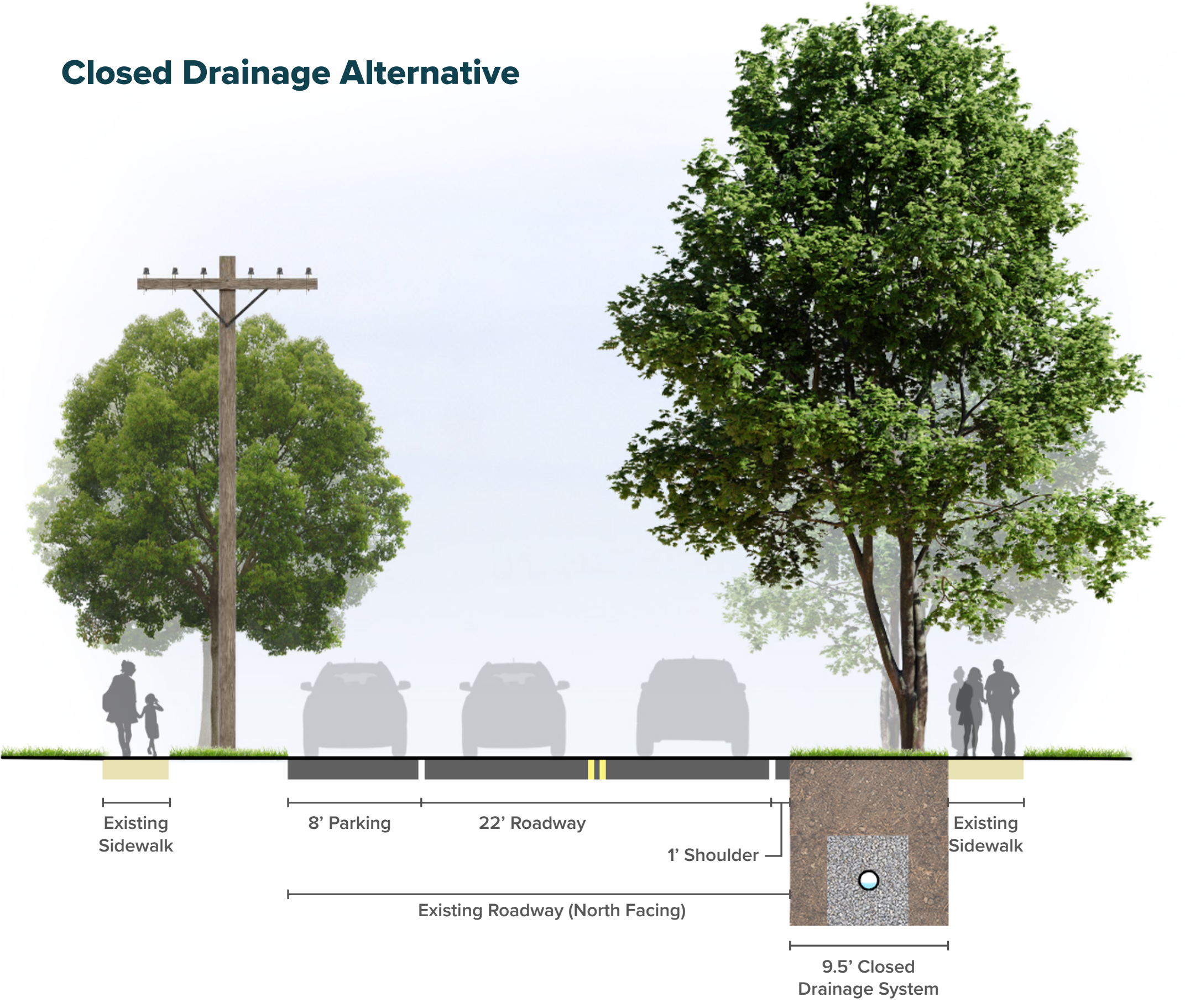
other

## Conceptual Sections

Open Drainage Alternative



Closed Drainage Alternative

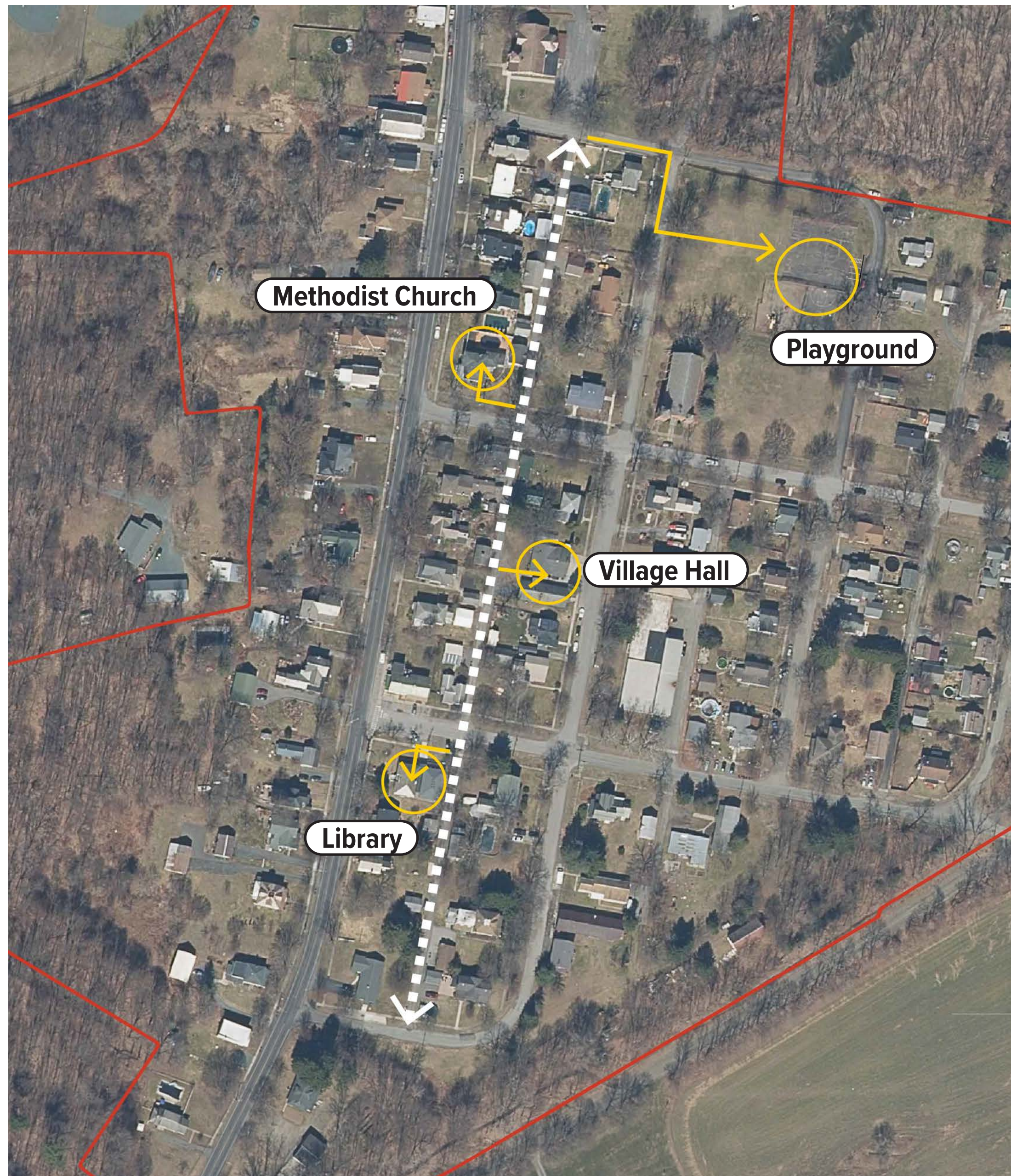




# 4 Alley Improvements

This project would periodically activate the alley between Emily Street and Lyon Street and serve as a connection to several Village amenities.

## Connections



## Representative Imagery



## Question

What activities would you like to see take place in the alley periodically? Place a sticker below!

historic walking tour

barn sale

community art show

barn quilt display

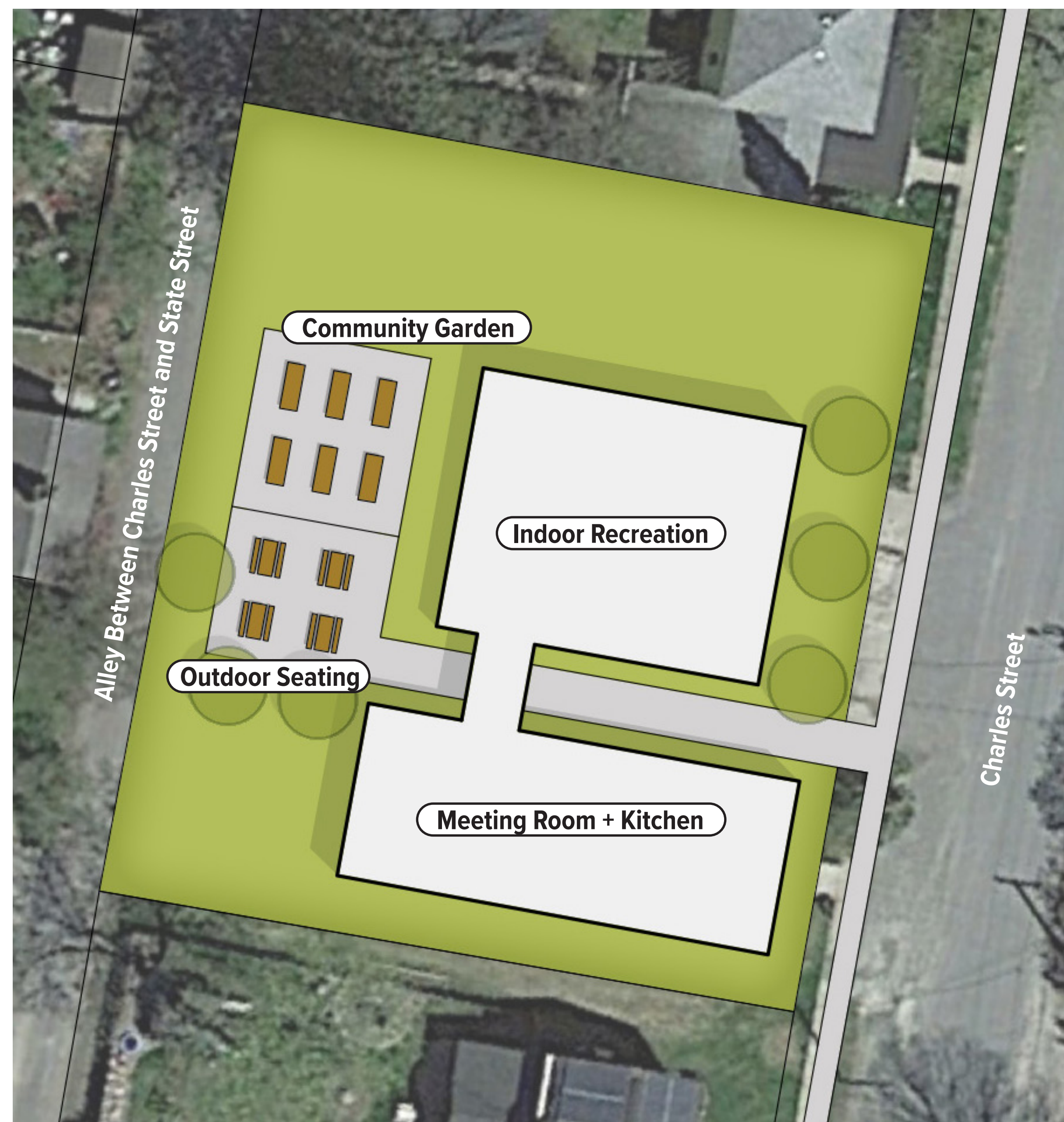
other



# 5 Village Hall + Fire Department

This project would rehabilitate the existing Village Hall and former Fire Department structures to better serve to community.

## Conceptual Plan



## Representative Imagery



## Question

What amenities would you like to see at the rehabilitated Village Hall and former Fire Department? Place a sticker below!

community room

community garden

recreation room

kitchen

youth programming

other



# 6 Village Playground

This project would involve upgrades to the playground to increase accessibility and safety, installation of a walking loop, formalized parking, skate ramps, benches, and picnic tables.

## Question

*In the future, what are you most looking forward to doing in the Village park? Place a sticker below!*

social gatherings

playing at the playground

skating

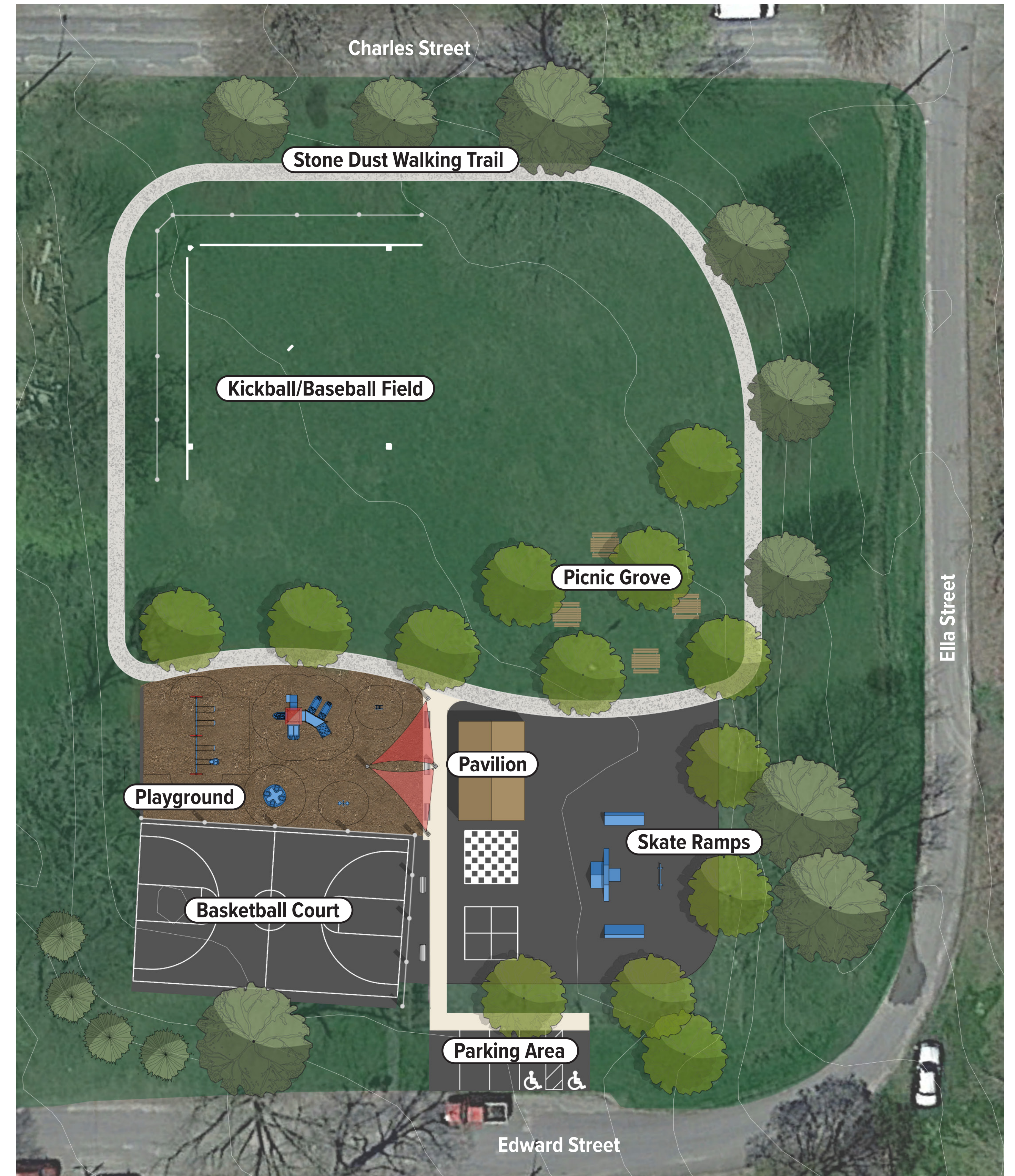
walking

other

## Representative Imagery



## Conceptual Plan

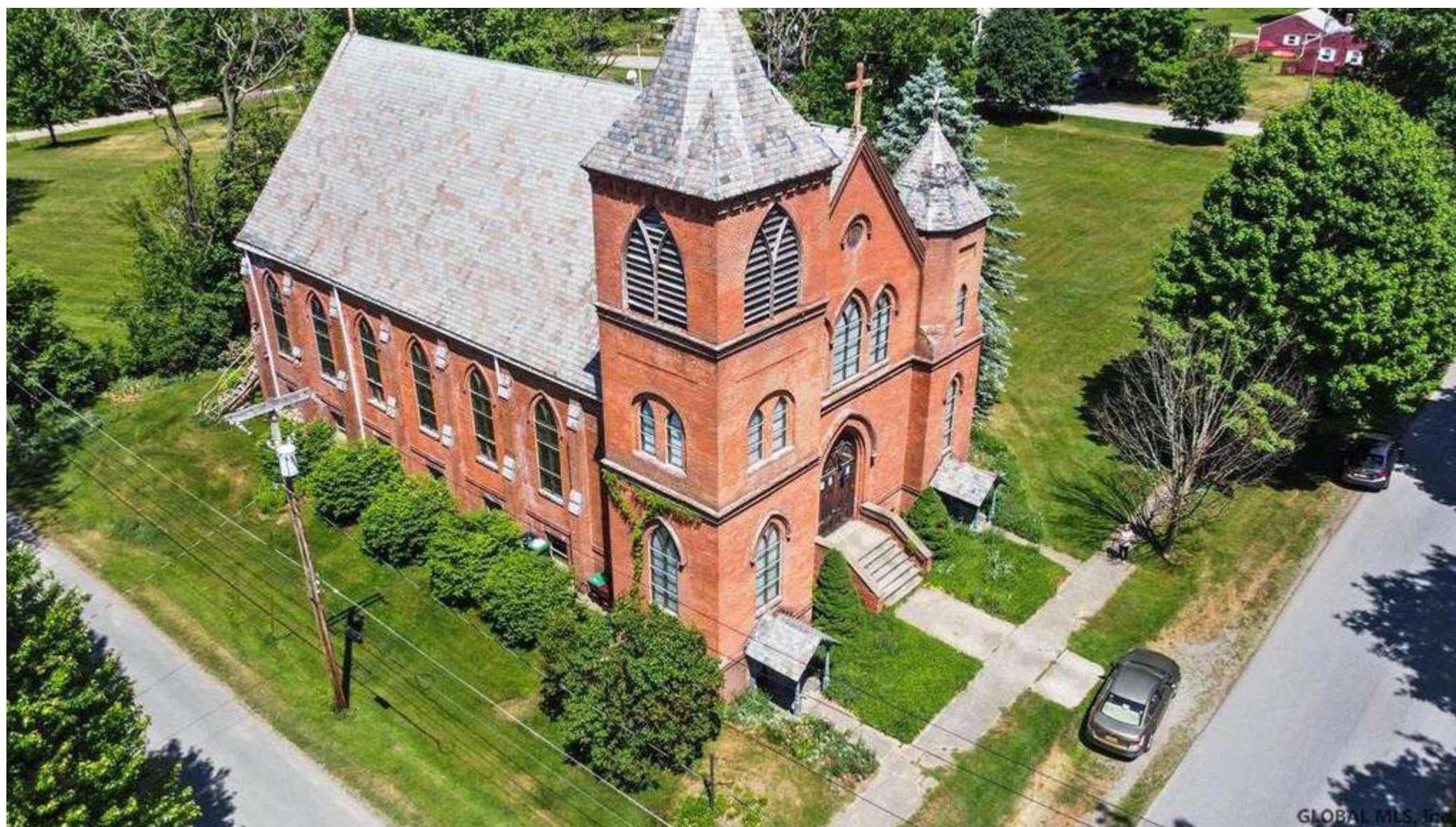




# 7 Former Church

This project would rehabilitate the former church into an event space and botanical garden.

## Existing Condition



## Representative Imagery



## Question

What types of events would you like to see hosted in the Village?  
Place a sticker below!

weddings

conferences

markets

live music

other

Use the space below to describe any potential concerns you have with this proposed use.



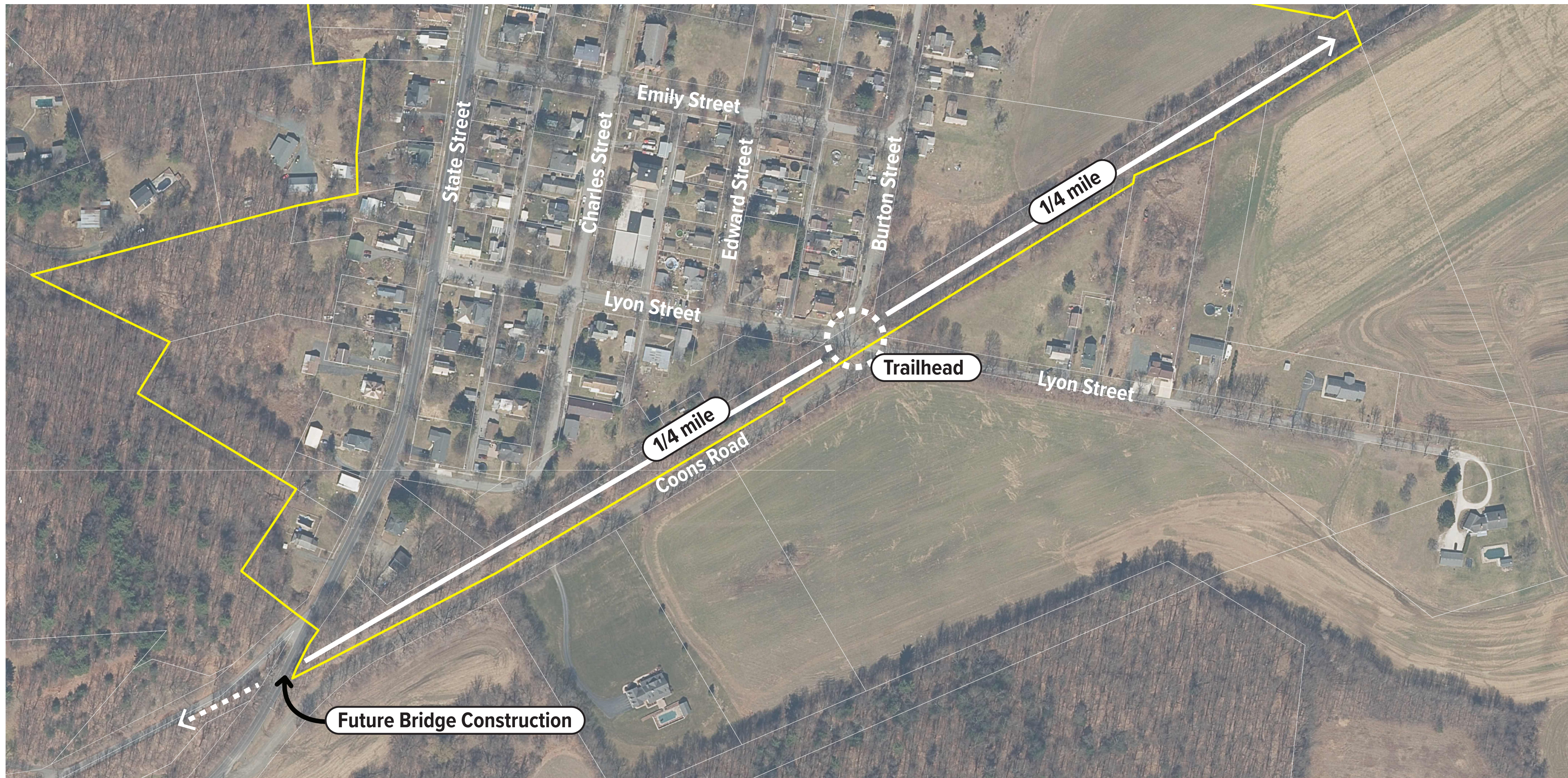
# 8 Rail to Trail

This project will introduce a nature trail for multi-season use along the former rail corridor that runs parallel to Coons Rd. There is potential to expand the trail's length along the rail corridor in the future to provide connections west to Troy and east to Vermont.

## Representative Imagery



## Conceptual Diagram



## Question

How would you like to use the nature trail? Place a sticker below!

walking

cross-country skiing

cycling

birding

other



# Community Vision + Goals

## Historic Village of Valley Falls

### Question

Which of the goals + strategies below do you strongly support?  
Place a sticker below in the shaded area!

### Vision Statement

*Valley Falls is a quaint, historic village characterized by a strong sense of community and the natural beauty of the Hoosic River. In the future, the Village will support a close-knit, multi-generational community. It will balance its small-town charm with targeted local economic activity to attract new residents and provide existing residents and visitors with affordable and diversified services. Its infrastructure will be well-maintained, providing a safe, accessible, and comfortable network of roadways, trails, and recreational destinations that celebrate the Village's scenic beauty, increase access to nature, and encourage walking. And, its historic character will be preserved in a manner that creates a safe, inviting, and livable community for all.*

### Question

What do you think is missing? List any additional goals below!

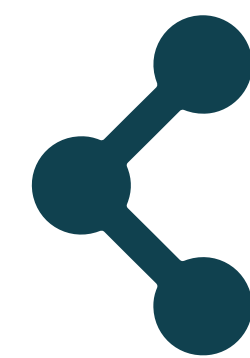
### Goals + Strategies

Place stickers below



**Preserve and maintain the Village's quaint historic character.**

- Develop educational resources for property owners about accessing historic preservation tax credits to support rehabilitation of historic buildings in the Village of Valley Falls.
- Draft and adopt land use regulations that identify where different land uses should occur to reinforce the Village's quaint character.
- Encourage the adaptive reuse and rehabilitation of existing structures and the infill of vacant lots.



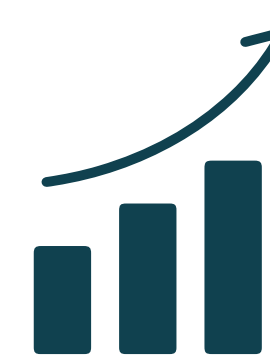
**Upgrade and maintain the Village's public infrastructure to improve safety and connectivity.**

- Repair sidewalks and drainage along the State Street corridor to improve accessibility and sustainably manage stormwater runoff.
- Upgrade and expand the amenities at the Village Park to increase accessibility and serve community members of all ages.
- Develop a long-term maintenance and operations plan for the wastewater treatment plant to ensure continuity and quality of services.



**Celebrate the Village's beauty by expanding recreational resources.**

- Redevelop the former Thompson Mill as a publicly accessible waterfront park.
- Create an interconnected system of sidewalks, trails, and community services to encourage active modes of transportation providing access to local and regional destinations.
- Diversify recreational resources to appeal to all ages and abilities.



**Encourage local economic development to activate the Village's main thoroughfares.**

- Draft and adopt land use regulations that define where commercial uses are appropriate, including development standards, to increase compatibility between residential and commercial uses.
- Allow for a mixing of land uses.
- Encourage small-scale locally-owned businesses that can occupy and enliven existing historic buildings.



**Support a lively, multi-generational, demographically diverse community.**

- Develop land use and development regulations that support aging in place by allowing accessory dwelling units and locating areas suitable for senior housing.
- Provide continued support for and expand the Village's existing youth programs.
- Upgrade and maintain public infrastructure to provide accessible, healthy connections that encourage social interactions in the public realm.
- Provide transit services to increase access to regional services and amenities.



# **Ideas / Questions / Feedback**

## **for the Historic Village of Valley Falls**

**Please use the space below to share your ideas, questions, and/or feedback with the Project Team!**

**Write  
On Me!**

To learn more about this project, please visit [www.HistoricValleyFalls.com](http://www.HistoricValleyFalls.com)